

Contents

	Page
Han® PushPull RJ45	60.02
Han® PushPull SCRJ	60.04
Han® PushPull Power 4/0	60.06
Han® PushPull RJ45 metal	60.08
Han® PushPull Power 4/0 metal	60.10

Features

- HARTING PushPull technology
- Compact design, high density
- Fast termination technique without tools
- PC board connection for device integration
- Complies with the requirements of the automation initiative of German domestic automobile manufacturers (AIDA)

Technical characteristics

Specifications	DIN EN 61 984 DIN VDE 0110
----------------	-------------------------------

Inserts

Number of contacts	4, screened
Terminal	RJ45 acc. to IEC 60 603-7
Transmission features	Cat 5e
Insulation resistance	$\geq 10^{10} \Omega$
Limiting temperatures	-40 °C ... 70 °C
Mechanical working life - mating cycles	≥ 500
Cable diameter	5 - 9.5 mm
Wire gauge	AWG 24 - 22 flexible AWG 23 - 22 solid

Hoods/housings

Material Hoods/Housings	thermoplastic, black
Locking	PushPull technology
Degree of protection	IP 65 / IP 67
Flammability acc. to UL 94	V 0



Identification	Part number	Drawing	Dimensions in mm
<p>Han® PushPull RJ45 Connector set</p> <p>Cable side including hood and male insert HARTING RJ Industrial® outer cable diameter: 6.5 - 9.5 mm PROFINET identification: PROFINET O-Plug RJ45</p> <p>Cable side including hood and male insert HARTING RJ Industrial® outer cable diameter: 5 - 8 mm</p>	<p>09 35 221 0421</p> <p>09 35 222 0421</p>		
<p>Components device side</p> <p>bulkhead mounted housing</p>	<p>09 35 002 0321</p>	<p>① Sealing</p> <p>Panel cut out</p>	
<p>RJ45 female, solder variant 90° angled</p>	<p>09 35 002 2101</p>	<p>Layout of PCB</p>	
<p>RJ45 female, solder variant 180° straight</p>	<p>09 35 002 2102</p>	<p>Layout of PCB</p>	

Features

- HARTING PushPull technology
- Compact design
- High density
- Transceiver for device integration
- Complies with the requirements of the automation initiative of German domestic automobile manufacturers (AIDA)

Technical characteristics

Specifications	DIN EN 61 984 DIN VDE 0110
----------------	-------------------------------

Inserts

Number of contacts	2
Terminal	SCRJ acc. to IEC 61 754-24
Limiting temperatures	-40 °C ... 70 °C
Mechanical working life	
- mating cycles	≥ 500
Fibre type	POF ¹⁾ 1 mm HCS ^{® 2)} 200 µm / 230 µm MM 50 µm / 125 µm MM 62.5 µm / 125 µm

Hoods/housings

Material Hoods/Housings	thermoplastic, black
Locking	PushPull technology
Degree of protection	IP 65 / IP 67
Flammability acc. to UL 94	V 0

1) POF Polymer-Optical Fibre

2) HCS[®] Hard Clad Silica (is registered trade mark of the SpecTran Corporation)



Identification	Part number	Drawing	Dimensions in mm
<p>Han® PushPull SCRJ Connector set</p> <p>Cable side including hood and male insert with SC contacts for POF¹⁾ 1 mm PROFINET identification: PROFINET O-Plug SCRJ</p> <p>Cable side including hood and male insert with SC contacts for HCS²⁾ 200 µm / 230 µm</p> <p>Cable side including hood and male insert with SC contacts for GI 50/62.5 µm / 125 µm</p>	<p>09 35 241 0422</p> <p>09 35 242 0422</p> <p>09 35 243 0422</p>		
<p>Components device side</p> <p>bulkhead mounting housing Optical transceiver not included</p> <p>Recommendation for transceiver and assembly manual on request</p>	<p>09 35 002 0323</p>		<p>① Sealing</p> <p>Panel cut out</p>

1) POF Polymer-Optical Fibre
2) HCS® Hard Clad Silica (is registered trade mark of the SpecTran Corporation)

Features

- HARTING PushPull technology
- Compact design
- Finger safe
- Cable side: female
 - Crimp termination
 - Han-Quick Lock® termination technology
Field assembly without special tools
- Device side: male
 - Solder variant, angled

Technical characteristics

Specifications	DIN EN 61 984 DIN VDE 0110
----------------	-------------------------------

Inserts

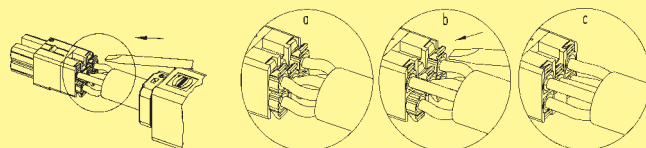
Number of contacts	4 + PE
Electrical data	
acc. to EN 61 984	16 A 230/400 V 4 kV 3
Rated current	16 A
Rated voltage conductor - ground	230 V
Rated voltage conductor - conductor	400 V
Rated impulse voltage	4 kV
Pollution degree	3
Insulation resistance	$\geq 10^{10} \Omega$
Limiting temperatures	-40 °C ... 125 °C
Mechanical working life	
- mating cycles	≥ 500
Cable diameter	9 - 13 mm
Termination	Crimp terminal (Han® P Contacts)
Wire gauge	0.5 - 2.5 mm ²
Termination	Han-Quick Lock®
Wire gauge	0.5 - 2.5 mm ²

Hoods/housings

Material Hoods/Housings	thermoplastic, black
Locking	PushPull technology
Degree of protection	IP 65 / IP 67
Flammability acc. to UL 94	V 0

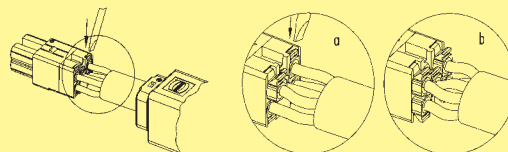
Assembly instructions Han-Quick Lock®

Assembly



Attention: While pushing the slide, please continue to push wire into the contact chamber.

Removal



Number of contacts

4 +



Identification	Part number	Drawing	Dimensions in mm
<p>Han® PushPull Power 4/0 Connector set</p> <p>Cable side including hood and female insert with crimp termination Order crimp contacts separately</p> <p>Cable side including hood and female insert with Han-Quick Lock® termination</p> <p>Device side including hood and male insert with solder termination, angled</p>	<p>09 35 231 0423</p> <p>09 35 232 0423</p> <p>09 35 233 0323</p>		
<p>Components device side</p> <p>bulkhead mounting housing</p> <p>male insert with solder termination, angled</p>	<p>09 35 002 0323</p> <p>09 35 002 3003</p>		
<p>Crimp contacts female silver plated for 0.5 mm² for 0.75 mm² for 1 mm² for 1.5 mm² for 2.5 mm²</p> <p>Locator for crimping tool 09 99 000 0001</p> <p>Crimp contact removal tool Han® P</p>	<p>09 35 000 6203</p> <p>09 35 000 6204</p> <p>09 35 000 6205</p> <p>09 35 000 6206</p> <p>09 35 000 6207</p> <p>09 99 000 0329</p> <p>09 99 000 0319</p>		

Features

- HARTING PushPull technology
- Compact design, high density
- Fast termination technique without tools
- PC board connection for device integration
- Complies with the requirements of the automation initiative of German domestic automobile manufacturers (AIDA)

Technical characteristics

Specifications	DIN EN 61 984 DIN VDE 0110
----------------	-------------------------------

Inserts

Number of contacts	4, screened
Terminal	RJ45 acc. to IEC 60 603-7
Transmission features	Cat 5e
Insulation resistance	$\geq 10^{10} \Omega$
Limiting temperatures	-40 °C ... 70 °C
Mechanical working life - mating cycles	≥ 500
Cable diameter	4 - 11 mm
Wire gauge	AWG 24 - 22 flexible AWG 23 - 22 solid

Hoods/housings

Material Hoods/Housings	zinc die-cast, nickel plated
Locking	PushPull technology
Degree of protection	IP 65 / IP 67
Flammability acc. to UL 94	V 0



Identification	Part number	Drawing	Dimensions in mm
<p>Han® PushPull RJ45 metal Connector set</p> <p>Cable side including hood and male insert HARTING RJ Industrial® outer cable diameter: 4 - 11 mm PROFINET identification: PROFINET O-Plug RJ45</p>	09 35 221 0401		
<p>Components device side</p> <p>bulkhead mounted housing</p>	09 35 002 0301	<p>① Sealing</p> <p>Panel cut out</p>	
<p>RJ45 female, solder variant 90° angled</p>	09 35 002 2101	<p>Layout of PCB</p>	
<p>RJ45 female, solder variant 180° straight</p>	09 35 002 2102	<p>Layout of PCB</p>	

Features

- HARTING PushPull technology
- Compact design
- Finger safe
- Cable side: female
 - Crimp termination
 - Han-Quick Lock® termination technology
Field assembly without special tools
- Device side: male
 - Solder variant, angled

Technical characteristics

Specifications	DIN EN 61 984 DIN VDE 0110
----------------	-------------------------------

Inserts

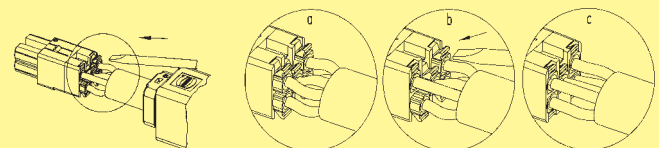
Number of contacts	4 + PE
Electrical data	
acc. to EN 61 984	16 A 230/400 V 4 kV 3
Rated current	16 A
Rated voltage conductor - ground	230 V
Rated voltage conductor - conductor	400 V
Rated impulse voltage	4 kV
Pollution degree	3
Insulation resistance	$\geq 10^{10} \Omega$
Limiting temperatures	-40 °C ... 70 °C
Mechanical working life	
- mating cycles	≥ 500
Cable diameter	4 - 11 mm
Termination	Crimp terminal (Han® P Contacts)
Wire gauge	0.5 - 2.5 mm ²
Termination	Han-Quick Lock®
Wire gauge	0.5 - 2.5 mm ²

Hoods/housings

Material Hoods/Housings	zinc die-cast, nickel plated
Locking	PushPull technology
Degree of protection	IP 65 / IP 67
Flammability acc. to UL 94	V 0

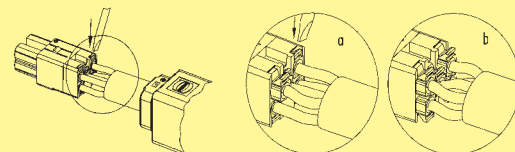
Assembly instructions Han-Quick Lock®

Assembly



Attention: While pushing the slide, please continue to push wire into the contact chamber.

Removal



Number of contacts

4 +

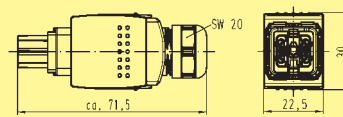


Identification	Part number	Drawing	Dimensions in mm
----------------	-------------	---------	------------------

Han® PushPull Power 4/0 metal Connector set

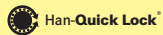
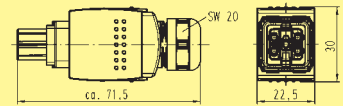
Cable side including hood and female insert with crimp termination
Order crimp contacts separately

09 35 231 0401



Cable side including hood and female insert with Han-Quick Lock® termination

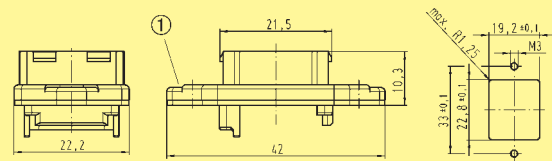
09 35 232 0401



Components device side

bulkhead mounting housing

09 35 002 0303

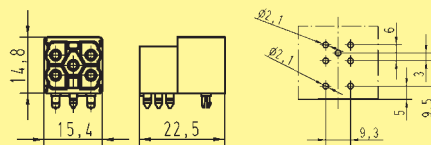


① Sealing

Panel cut out

male insert with solder termination, angled

09 35 002 3003

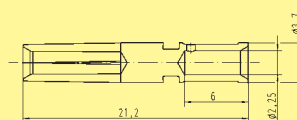


Layout of PCB

Crimp contacts

- female silver plated
- for 0.5 mm²
- for 0.75 mm²
- for 1 mm²
- for 1.5 mm²
- for 2.5 mm²

09 35 000 6203
09 35 000 6204
09 35 000 6205
09 35 000 6206
09 35 000 6207



Locator

for crimping tool 09 99 000 0001

09 99 000 0329

Crimp contact removal tool Han® P

09 99 000 0319



