

Han® Accessories

	Page
Test connectors	20.02
PE-Multiple ground connection	20.04
Security accessories	20.05
Cable clamp fittings	20.05
PCB adapter	20.06
Docking frame	20.08

Test connectors

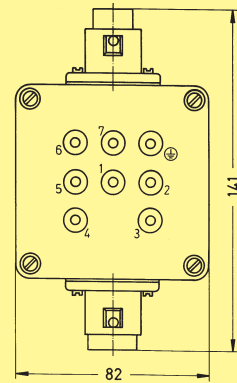
Identification Series Part No. Drawing Dimensions in mm

Test connectors



Han 7 D

09 21 000 9907



Han 6 E

09 33 000 9904

Han 10 E

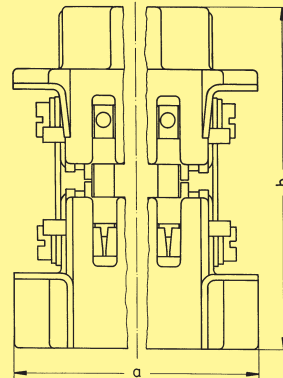
09 33 000 9905

Han 16 E

09 33 000 9906

Han 24 E

09 33 000 9907



	a	b
6	51	69
10	64	69
16	84.5	69
24	111	69

Han 10 A

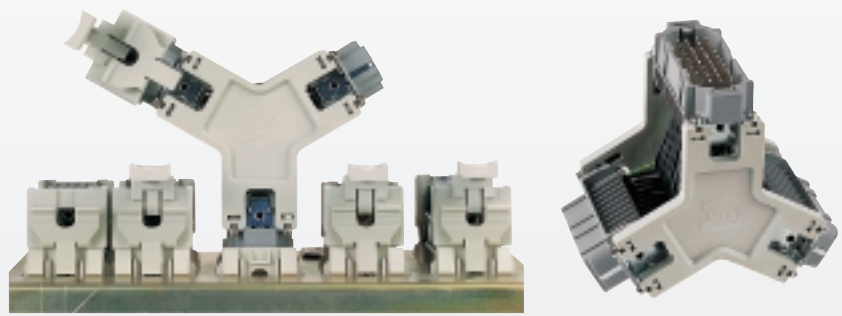
on request

Han 16 A

on request

Adapter Han A (09 20 000 9933) and Assembly plates (09 38 000 9901) are useable together for Han 10 A and Han 16 A

Accessories
Inserts



Test connectors

Identification	Series	Part No.	Drawing	Dimensions in mm
Test connectors complete assembly	Han 24 DD	09 16 000 9911		
	Han 42 DD	09 16 000 9912		
	Han 72 DD	09 16 000 9913		
	Han 108 DD	09 16 000 9914		
	Han 40 D	09 21 000 9913		
	Han 64 D	09 21 000 9914		
Assembly plates for custom test adapters		09 38 000 9901		

Test connectors for intermediate test function are used in electrical installations for testing of equipments under electrical load. The test connector is a one piece male and two piece female insert, electrically and mechanically connected. After mating the test connector between the connectors of the installed equipment the electrical contact is made.

Characteristics

- Compact construction, Y-shape design
- Testing is possible for male and female inserts
- All connectors are accessible in both side by side arrangements in sheet metal panels or when connectors are mounted on standard rails
- Special versions are possible by using the assembly plates
- Assembly plates can be used for contact inserts size Han 6 B up to 24 B

Using customer special testing adapters the relevant regulations have to be observed.

Technical Details

Inserts

Working current	10 A
Working voltage	250 V
Pollution degree	3 (C)
Test voltage U_{rms}	2 kV
Material	Polyamide/Polycarbonate
Insulation resistance	$\geq 10^{10} \Omega$
Temperature range	- 40 °C ... + 125 °C
Mechanical working life	≥ 500

Contacts

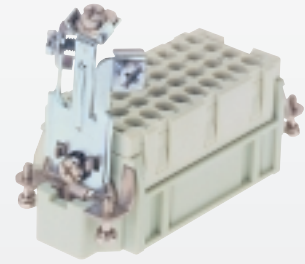
Material	copper alloy
Contact surface	
- hard-silver plated	3 μ m Ag
Contact resistance	$\leq 3 m\Omega$

Assembly plates pack contents

Delivery comprises

- 2 assembly plates
- 12 nuts for insertion

3 x

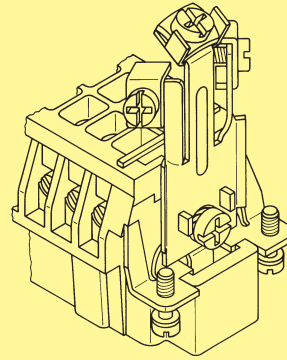


Multiple ground connection

Identification Part No. Drawing Dimensions in mm

PE-Multiple ground connection

09 33 000 9992



Features

- 3 PE-terminations
- Screws with ± head
- Self lifting washer
- Suitable for use with all inserts of the Han 6 B to 24 B size
- Suitable in hood high construction

Technical characteristics

Termination points	3
Termination wire gauge	0.5–2.5 mm ² AWG 20-14
Material	copper alloy
Surface	Ni
Contact resistance	≤ 3 m Ω

Application

The PE-multiple ground connection may be used to terminate three PE-wires on one connector.
 Each PE-wire can be terminated and removed separately.
 (acc. VDE 0113 DIN EN 60 204)

Pack contents


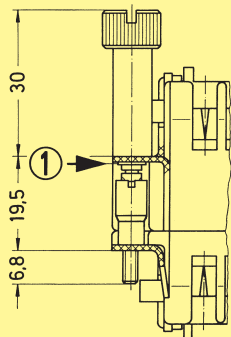
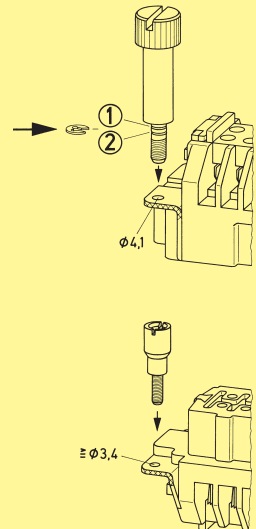


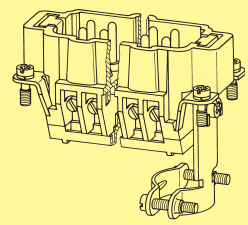

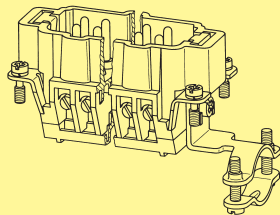
- Delivery comprises
- Multiple ground connection
 - Fixing screw M4 with washer

Stock items in bold type

Accessories
Inserts

20
04

Security accessories

Identification	Part No.	Drawing	Dimensions in mm
<p>Screw pin¹⁾</p> 	09 33 000 9910	<p>When using inserts without hoods or housings and requiring a locking facility this system is suitable for all rectangular connectors of the Han B series.</p> <p>For each connector we recommend two screw pins and two bushes as shown which are fitted diagonally to the inserts instead of the ordinary fixing screws. Holes for fixing to be drilled as shown.</p> <p>Mounting example</p> 	
<p>Bush¹⁾</p> 	09 33 000 9912		
<p>¹⁾ order 2 pieces for one connector</p>			
<p>Straight cable clamp fitting</p> 	09 00 000 5340		<p>Clamping range of strain relief clamp: 9 - 19 mm</p>
<p>Angled cable clamp fitting</p> 	09 00 000 5339		

Features

When using inserts without hoods or housings and requiring a strain relief this system is suitable for all rectangular connectors of series Han DD, Han 40-64 D, Han E/ES, Han HsB, Han HVE/HVES, Han EE, Han K 8/24. Fitted at the opposite end to the PE-termination.

Pack contents

Delivery comprises

- Cable clamp fitting with 2 screws M3
- Fixing screw M4 with washer



Han PCB-adapter

Identification Part No. Drawing Dimensions in mm

Adapter

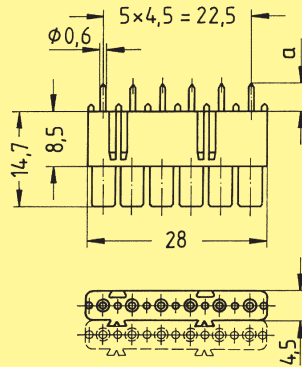
(contacts included)
can be used in combination with:
Han DD-Module
Han K 8 / 24
Han K 6 / 36
Han DD

for pcb up to 1.6 mm

for pcb up to 2.4 mm

09 16 000 9905

09 16 000 9908



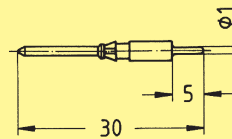
Part No.	a
09 16 000 9905	3.8
09 16 000 9908	4.6

Han DD

Male contacts



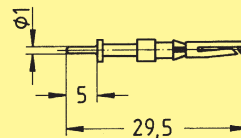
09 15 000 6191



Female contacts

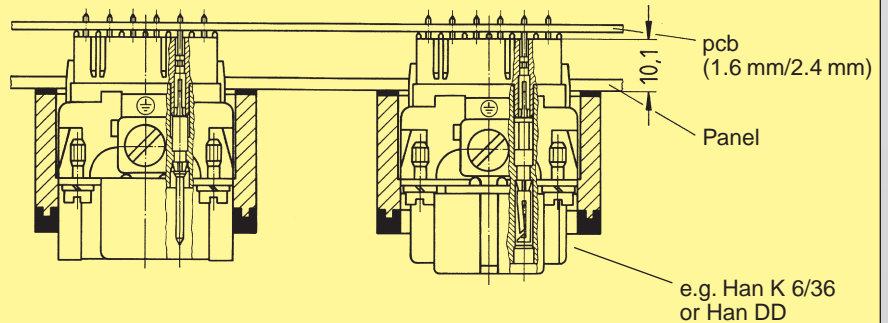


09 15 000 6291

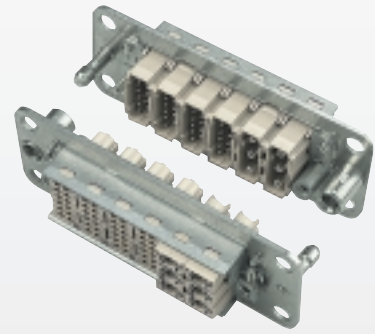


Application

The pcb-adapter is used to terminate control and data lines via pcb to the above mentioned connector inserts.



Stock items in bold type



Identification Size Part No. Drawing Dimensions in mm

Identification	Size	Part No.
Han® Docking frame	6 B	09 30 006 1701
	10 B	09 30 010 1701
	16 B	09 30 016 1701
	24 B	09 30 024 1701

1) Distances for electrical and FOC contacts max. 27 mm, for pneumatic contacts max. 26.5 mm

Size	a	b	c	d	e	f
6 B	86	69	69	37.5	54.5	84
10 B	99	82	82	50.5	67.5	97
16 B	119.5	102.5	102.5	71	88	117.5
24 B	146	129	129	97.5	114.5	144

Features

- ❑ Suitable for all inserts of the series Han® B with drilled fixing holes, i. e.: Han® E, Han® ES, Han® DD, Han-Com® and Han-Modular®
- ❑ Ideal for applications in the field of transportation, MCCs as well as in the printing industry
- ❑ Due to the floating system of the docking frame the PE connection of the mounting base has to be installed separately
- ❑ Inserts are protected against mechanical damage

Technical characteristics

Material	
- Docking frame	Stainless Steel
- Fixing screws	Steel, zinc plated
Pull-in-range	
- x-axis	± 1.5 mm
- y-axis	± 1.5 mm
Mechanical working life	
- Mating cycles	≥ 500

Pack contents

- Delivery comprises
- 1 frame
 - 4 cheese head shoulder screws to fix the docking frame
 - 4 insert fixing screws

Stock items in bold type

Identification	Size	Part No.	Drawing	Dimensions in mm
Grip panel	24 B	09 00 024 5601		
Grip panel with screw adapter and screw	24 B	09 00 024 5611		
Screw adapter bulkhead mounting		09 00 000 5602		

Features

- Grip panel suitable for Han® 64 D, 108 DD
Han® 24 E, ES, ESS
Han® 46 EE
- Multiple shield connections via grip panel
- Cable can be fixed with clamps or cable tie

Technical characteristics

Grip panel - Surface	8 µm Zn
Adapter - Surface	Die cast zinc alloy 5 µ Ni over 8 µ Cu

Application

The grip panel can be used for termination of several shielded cables to be fixed on one connector.

Accessories
Inserts

Identification	Size	Part No.	Drawing	Dimensions in mm
Clamps for shield-lever and clamp frame for shielded cables		09 00 000 5341		
		09 00 000 5342		

Stock items in bold type



Accessories
Inserts