

Contents

Page

Technical characteristics Han® HsB	07.02
Han® 6 HsB	07.03
Han® 12 HsB	07.04

Features

- screw termination
- wire-protection included
- ideal for power supply applications
- termination with standard screw driver

Technical characteristics

Specifications **DIN EN 60 664-1**
DIN EN 61 984

Approvals **UL, CE**

Inserts

Number of contacts **6, 12 (2 x 6), + PE**
 Electrical data
 acc. to EN 61 984 **35 A 400/690 V 6 kV 3**
 Rated current **35 A**
 Rated voltage conductor - ground **400 V**
 Rated voltage conductor - conductor **690 V**
 Rated impulse voltage **6 kV**
 Pollution degree **3**

or **35 A 500 V 6 kV 3**

Rated voltage
 acc. to UL/CSA **600 V**

Insulation resistance **≥ 10¹⁰ Ω**
 Material **polycarbonate**
 Limiting temperatures **-40 °C ... +125 °C**
 Flammability acc. to UL 94 **V 0**
 Mechanical working life
 - mating cycles **≥ 500**

Contacts

Material **copper alloy**
 Surface
 - hard-silver plated **3 μm Ag**
 Contact resistance **≤ 1 mΩ**
 Screw terminal
 - Wire gauge¹⁾ **6 mm²**
 - AWG **10**
 - Tightening torque **1.2 Nm**

Hoods/Housings

Material **aluminium die-cast**
 Surface **powder-coated**
RAL 7037
 Locking element **Han-Easy Lock®**
 Hoods/Housings sealing **NBR**
 Limiting temperatures **-40 °C ... +125 °C**
 Degree of protection acc. to
 DIN EN 60 529
 for coupled connector **IP 65**
 Further selection of hoods/housings see chapter 31

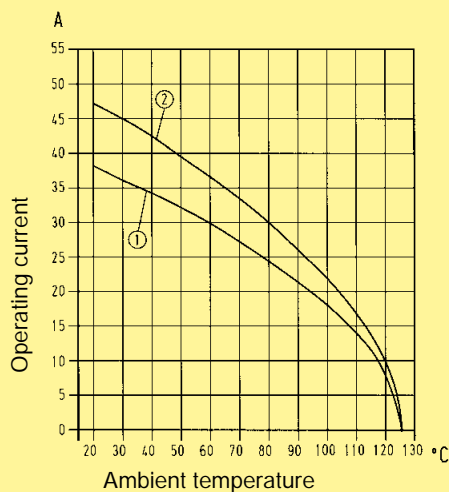
Accessories

Cable clamps **chapter 95**
 Coding of hoods/housings **chapter 95**
 Label acc. to CSA-approval **chapter 95**
 Han-Snap® **chapter 11**

Current carrying capacity

The current carrying capacity of the connectors is limited by the thermal load capability of the contact element material including the connections and the insulating parts. The derating curve is therefore valid for currents which flow constantly (non-intermittent) through each contact element of the connector evenly, without exceeding the allowed maximum temperature.

Measuring and testing techniques according to
 DIN EN 60 512-5-2

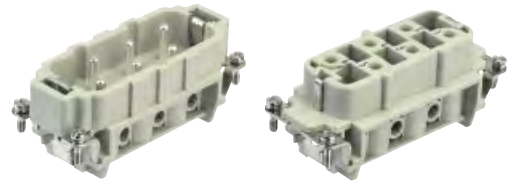


① wire gauge: 4 mm²

② wire gauge: 6 mm²

Number of contacts

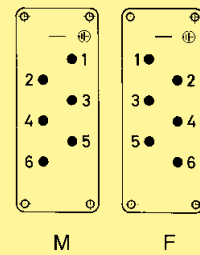
6 +



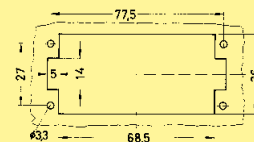
Identification	Series	Part number		Drawing	Dimensions in mm
		Male insert (M)	Female insert (F)		
Screw terminal	Han® HsB				
	1-6	09 31 006 2601	09 31 006 2701		

1) Distance for contact max. 21 mm

Contact arrangement (view from termination side)



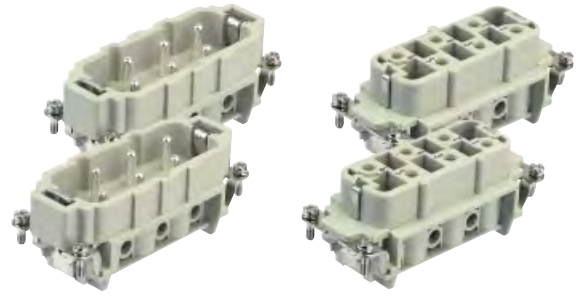
Panel cut out for inserts
for use without hoods/housings



Han
HsB

Number of contacts

12 +



Han
HsB

Identification	Series	Part number		Drawing	Dimensions in mm
		Male insert (M)	Female insert (F)		
Screw terminal	Han® HsB			<p>1) Distance for contact max. 21 mm</p> <p>Contact arrangement (view from termination side)</p> <p>Panel cut out for inserts for use without hoods/housings</p>	<p>77,5</p> <p>27</p> <p>18</p> <p>34</p> <p>1,2</p> <p>34</p> <p>1,2</p> <p>33</p> <p>84,5</p> <p>34</p>
		<p>1-6</p> <p>7-12</p>	<p>09 31 006 2601</p> <p>09 31 006 2611</p>		